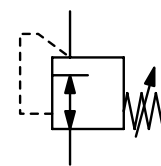


Description	Pressure regulator made of stainless steel throughout. Even when spindle is unscrewed the indicated minimum outlet pressure is existent. Inner parts are replaceable.
Medium	With stainless-steel dirt-trap / strainer
Supply pressure	aggressive liquids, compressed air or non-corrosive gases. Not suitable for steam!
Minimum press. difference	see chart, max. 40 bar
Adjustment	$P_1 : P_2 = 1$ bar
Relieving function	with hexagon socket, with locknut
Gauge port	non-relieving
Mounting position	$G\frac{1}{4}$ on both sides of the body, one screw plug supplied
Flange	any, preferably vertical
Temperature range	according DIN 1092, overall length according DIN 558-1
Material	0 °C to 190 °C / 32 °F to 374 °F for FKM for media and ambient temperature
	0 °C to 130 °C / 32 °F to 266 °F for EPDM for media and ambient temperature
	Body, spring cage, inner valve: stainless steel 1.4408 / V4A / 316 L
	Elastomer and seals: FKM / FPM, optionally EPDM



**DN 15 up to DN 50
liquids or gases**

Dimensions			K _v -value	Flow rate	Supply	Mounting	Pressure	Order	
A	B	C	value	water	pressure	flange	range	number	
mm	mm	mm	(m³/h)*1	l/min*2	max. bar	DN	bar		

Regulator with flange				for liquids, supply pressure max. 25/40 bar non-relieving, 1.4408 / V4A / 316L, FKM			RAF		
130	137	95	2.9	50	25	DN15	0.2 ... 2	RAF-04A	
	118				40		0.5 ... 4	RAF-04B	
	118				40		1.5 ... 6	RAF-04C	
	118				40		1.5 ... 10	RAF-04D	
	136				40		2.0 ... 20	RAF-04F	
150	137	105	3.9	65	25	DN20	0.2 ... 2	RAF-06A	
	118				40		0.5 ... 4	RAF-06B	
	118				40		1.5 ... 6	RAF-06C	
	118				40		1.5 ... 10	RAF-06D	
	137				40		2.0 ... 20	RAF-06F	
160	150	115	5.4	90	25	DN25	0.2 ... 2	RAF-08A	
	118				40		0.5 ... 4	RAF-08B	
	118				40		1.5 ... 6	RAF-08C	
	118				40		1.5 ... 10	RAF-08D	
	137				40		2.0 ... 20	RAF-08F	
180	150	140	6.1	102	25	DN32	0.2 ... 2	RAF-10A	
	118				40		0.5 ... 4	RAF-10B	
	118				40		1.5 ... 6	RAF-10C	
	118				40		1.5 ... 10	RAF-10D	
	137				40		2.0 ... 20	RAF-10F	



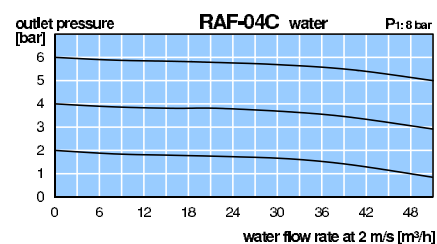
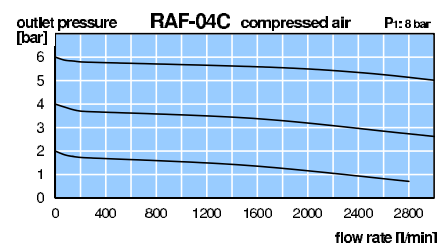
RAF-04...-10A



RAF-04...-10B/C/D



RAF-04...-10F



* Product group

Order example:
RAF-04A

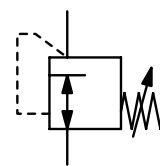
*1 at 2 m/s water speed
*2 for compressed air the flow is 70 times greater
*3 02 = 0...2 bar, 04 = 0...4 bar, 06 = 0...6 bar, 10 = 0...10 bar, 16 = 0...16 bar, 25 = 0...25 bar

Gauges: see chapter for measuring devices

PDF CAD
www.aircom.net



Description	Pressure regulator made of stainless steel throughout. Even when spindle is unscrewed the indicated minimum outlet pressure is existent. Inner parts are replaceable.
Medium	With stainless-steel dirt-trap / strainer
Supply pressure	aggressive liquids, compressed air or non-corrosive gases. Not suitable for steam!
Minimum press. difference	see chart, max. 40 bar
Adjustment	P ₁ : P ₂ = 1 bar
Relieving function	with hexagon socket, with locknut
Gauge port	non-relieving
Mounting position	G $\frac{1}{4}$ on both sides of the body, one screw plug supplied
Flange	any, preferably vertical
Temperature range	according DIN 1092, overall length according DIN 558-1
Material	0 °C to 190 °C / 32 °F to 374 °F for FKM for media and ambient temperature
	0 °C to 130 °C / 32 °F to 266 °F for EPDM for media and ambient temperature
	Body, spring cage, inner valve: stainless steel 1.4408 / V4A / 316 L
	Elastomer and seals: FKM / FPM, optionally EPDM



**DN 15 up to DN 50
liquids or gases**

Dimensions			K _v - value	Flow rate water	Supply pressure	Mounting flange	Pressure range	Order number	C*
A	B	C							
mm	mm	mm	(m ³ /h)*1	l/min*2	max. bar	DN	bar		

Regulator with flange

for liquids, supply pressure max. 25/40 bar
non-relieving, 1.4408 / V4A / 316L, FKM

RAF

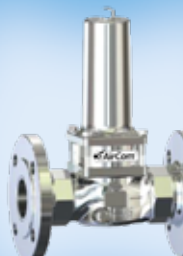
200	269	150	9.0	150	25	DN40	0.2 ... 2	RAF-12A
	219				40		0.5 ... 4	RAF-12B
	219				40		1.5 ... 6	RAF-12C
	219				40		1.5 ... 10	RAF-12D
	247				40		2.0 ... 20	RAF-12F
230	269	165	13	216	25	DN50	0.2 ... 2	RAF-16A
	219				40		0.5 ... 4	RAF-16B
	219				40		1.5 ... 6	RAF-16C
	219				40		1.5 ... 10	RAF-16D
	247				40		2.0 ... 20	RAF-16F



RAF-12/-16A



RAF-12/-16B/C/D



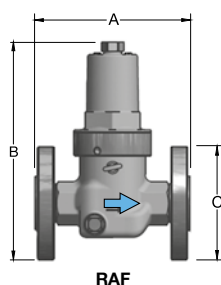
RAF-12/-16F

Special options, add the appropriate letter

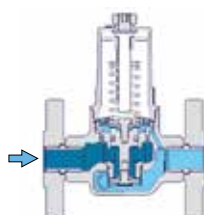
EPDM Elastomer membrane and seals, FDA approval **RAF-...TD**

Accessories, enclosed

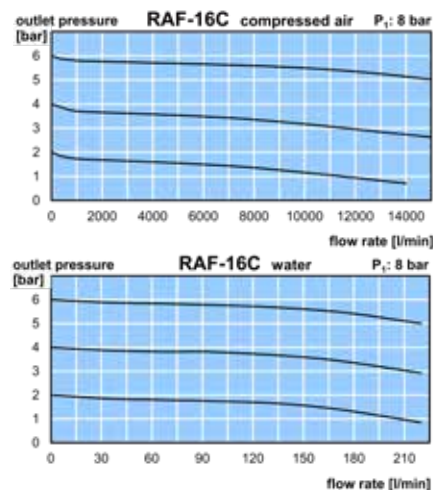
SST pressure gauge Ø 50 mm, 0...^{*3} bar, G $\frac{1}{4}$, for DN 15 **MS5002-...^{*3}**
Ø 63 mm, 0...^{*3} bar, G $\frac{1}{4}$, and all the rest of them **MS6302-...^{*3}**



RAF



RAF



*1 at 2 m/s water speed *2 for compressed air the flow is 70 times greater

*3 02 = 0...2 bar, 04 = 0...4 bar, 06 = 0...6 bar, 10 = 0...10 bar, 16 = 0...16 bar, 25 = 0...25 bar

* Product group

PDF CAD
www.aircom.net



Order example:
RAF-12A

Special



9